

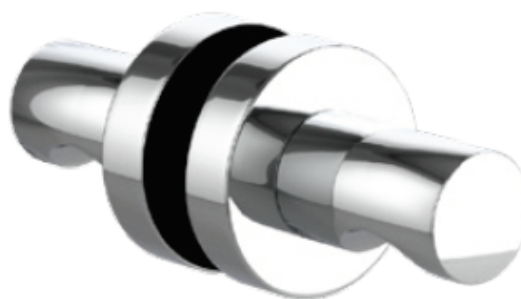


LET  
THERE  
BE **DESIGN.**

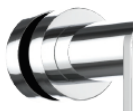
## FEATURES

- Premium 304 Grade Stainless Steel
- Solid Mount Construction
- Concealed Installation Hardware
- Solid End Cap provided for side opposite to the door for a seamless look

Double Knob shown  
with a Medium Rosette



Medium Rosette  
(Dia 1 1/4")



Large Rosette  
(Dia 1 1/2")

## COLLECTION CELLO

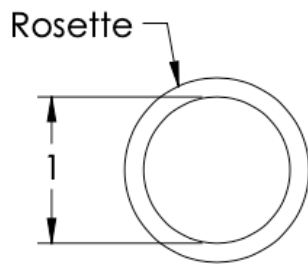
### DOUBLE KNOB

| Model                | Product     | Finishes Available   |
|----------------------|-------------|--|
| CEL-KND <u>XX-XX</u> | Double Knob | Multiple finishes available.<br>Over 23 finishes to choose from. |

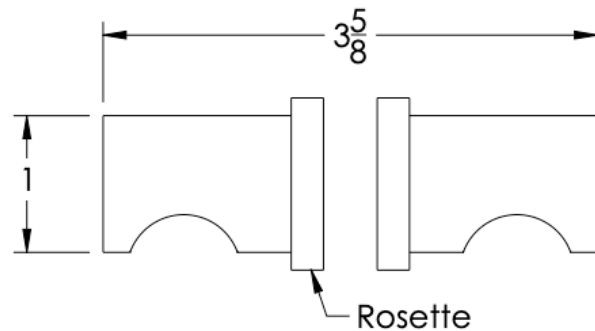
|          |                          |                                |                           |
|----------|--------------------------|--------------------------------|---------------------------|
| FINISHES | Polished (-P)            | Antique Copper (-ACOP)         | Polished Gold (-PGLD)     |
|          | Brushed (-B)             | Polished Brass (-PBRs)         | Brushed Copper (-BCOP)    |
|          | Brushed Gold (-BGLD)     | Matte White (-WHT)             | Brushed Rose Gold (-BRGD) |
|          | Matte Black (-BLK)       | Brushed Modern Bronze (-BMBRZ) | Brushed Black (-BRBLK)    |
|          | Oil Rubbed Bronze (-ORB) | Glossy White (-GWHT)           | Polished Black (-PBLK)    |
|          | Brushed Brass (-BBS)     | Polished Rose Gold (-PRGD)     | Antique Nickel (-ANKL)    |
|          | Brushed Bronze (-BBRZ)   | Unlacquered Brass (-UBRS)      | Black Nickel (-NKBL)      |
|          | Antique Brass (-ABRS)    | Polished Nickel (-PNKL)        |                           |

| No Rosette | Medium Rosette<br>(Dia 1 1/4") | Large Rosette<br>(Dia 1 1/2") |
|------------|--------------------------------|-------------------------------|
| CEL-KND-NR | CEL-KND-MR                     | CEL-KND-LR                    |

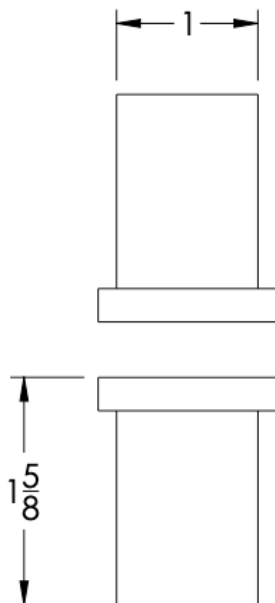
FRONT



SIDE



TOP


Medium Rosette  
(Dia 1 1/4")

Large Rosette  
(Dia 1 1/2")

**Installation Notes:** Diameter of glass hole for installation is as follows:

- For Medium Rosette(-MR) and Large Rosette (-LR) the hole diameter is 1/2"
- For No Rosette (-NR) the hole diameter is 5/16"

Standard hardware supplied can accommodate glass thicknesses 1/4" to 1/2". Please contact us for custom hardware in case glass thickness exceeds 1/2".

Dimensions in inches

NOTE: Dimensions subject to change without notice.